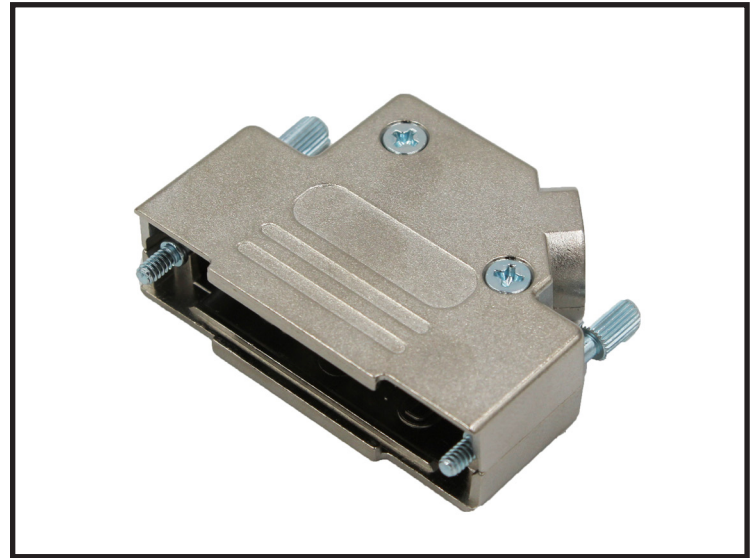
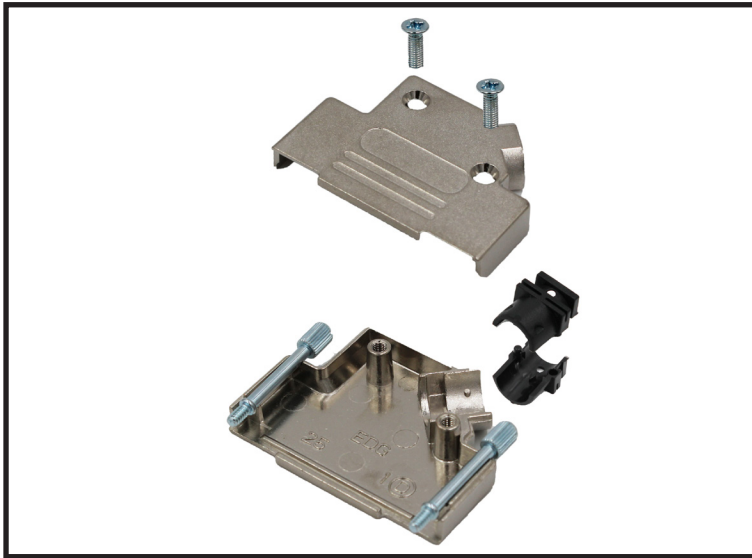


MHD45ZK Series | Die Cast D-Sub Hood



Description

- Available in 9,15, 25 , 37 way
- Re-openable
- Cable entry, Side entry,
- Operating Temperature, -40°C to 120°C
- Will accommodate up to 13 mm diameter cable
- 4-40UNC Jackscrews

The Kit Contains:

- | | |
|-----------------------|-----|
| Backshell halves | x 2 |
| 4-40 Jackscrews | x 2 |
| Plastic cable inserts | x 2 |
| Backshell screws | x 2 |
| C-Clip | x 1 |

Specification

- Ways: 9, 15, 25, 37
- Housing Material: Die Cast Zinc Alloy
- Cable Entry: 45° Entry
- Cable OD: Up to 13mm

Dimensions			
Size	A	B	C
09	31.0	24.9	36.3
15	39.5	33.3	40.3
25	53.2	47.0	40.3
37	69.7	63.5	40.3
50	67.4	61.1	44.9

