

THIS IS A C.A.D. GENERATED DRAWING
DO NOT MAKE MANUAL REVISIONS TO MASTER.



UNLESS OTHERWISE SPECIFIED TOLERANCES
ON DECIMAL IS: ANGLE
UNIT: MM X.
X.X

1) Product main performance:

Operating Temperature : -55°C~200°C
Humidity(max) : <=95% [at 60 deg C / 140 F]
Shielding : 75dB(10MHz) 40dB(1GHz)
Salt Spray Corrosion : 96hr
P op (max) : 60 bar (870 psi)

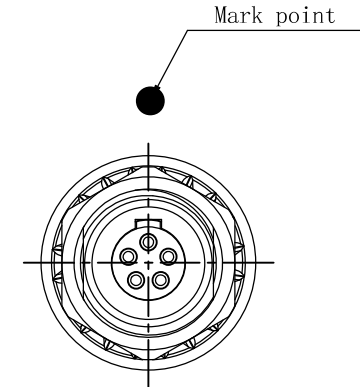
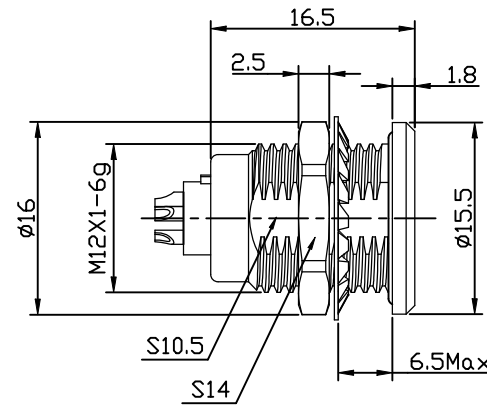
Mechanical data:

Vibration : 15g[10Hz~2000Hz]
Shock Resistance : 100g[6ms]
Endurance (Shell) : 5000+

Other Specification:

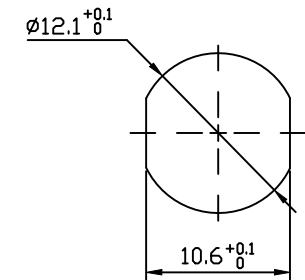
Contact PIN : Gold plated Tin bronze
Housing Material : Chrome plated brass
Other metal spare parts : Nickel plated brass
Insulator material: PPS
IP Rating : IP68

*ALL MATERIALS ARE RoHS COMPLIANT.



MHCP1TxxSS

Pin Configuration



Panel cut-outs

| Pin Configuration | 02 | 03 | 04 | 05 | 06 | 07 |
|----------------------------|--------------------|------|------|-----|-------|-------|
| Pin Number | | | | | | |
| Pin Size (mm) | 1.3 | 1.3 | 0.9 | 0.9 | 0.7 | 0.7 |
| Withstand voltage (V) (AC) | 1000 | 1000 | 875 | 875 | 875 | 875 |
| Rated Current (A) | 15.0 | 12.0 | 10.0 | 9.0 | 7.0 | 7.0 |
| Insulation resistance (MΩ) | ≥5000MΩ (500V(DC)) | | | | | |
| R (max) (mΩ) | ≤5 | ≤5 | ≤9 | ≤9 | ≤12.5 | ≤12.5 |
| AWG (max) Stranded Wire | 20 | 20 | 24 | 24 | 26 | 26 |

THESE DRAWINGS AND SPECIFICATIONS ARE THE PROPERTY OF MH CONNECTORS AND SHALL NOT BE REPRODUCED, COPIED OR USED AS THE BASIS FOR THE MANUFACTURE OR SALE OF APPARATUS WITHOUT WRITTEN PERMISSION.

| | | | |
|------------|----------|----------|--|
| DRAWN | | DATE | |
| E.P. | | 23-10-23 | |
| APPROVED | | DATE | |
| S.R. | | 23-10-23 | |
| SCALE | SHEET OF | REV: | |
| NA | 1 OF 2 | 2 | |
| DRAWING No | | | |
| MHCP1TxxSS | | | |



THIS SERIES FULLY CONFORMS TO THE EUROPEAN UNION DIRECTIVES 2015/863/EU AND 2011/65/EU FOR RoHS COMPLIANCY.



MH CONNECTORS,
DIVISION OF EDAC

THIS IS A C.A.D. GENERATED DRAWING
DO NOT MAKE MANUAL REVISIONS TO MASTER.



UNLESS OTHERWISE SPECIFIED TOLERANCES
ON DECIMAL IS: ANGLE
UNIT: MM X.
X.X

1) Product main performance:

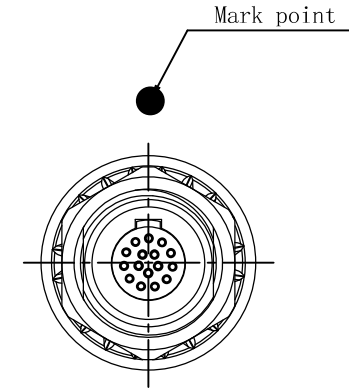
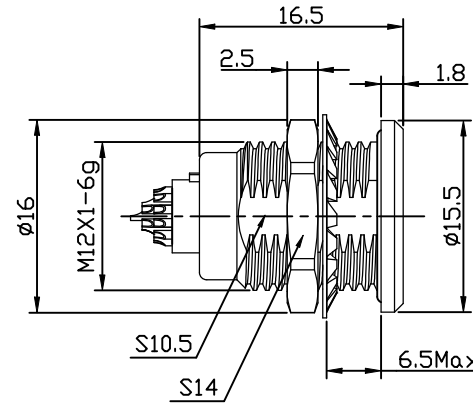
Operating Temperature : -55°C~200°C
Humidity(max) : <=95% [at 60 deg C / 140 F]
Shielding : 75dB(10MHz) 40dB(1GHz)
Salt Spray Corrosion : 96hr
P op (max) : 60 bar (870 psi)

Mechanical data:

Vibration : 15g[10Hz~2000Hz]
Shock Resistance : 100g[6ms]
Endurance (Shell) : 5000+

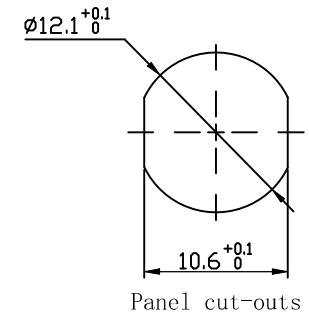
Other Specification:

Contact PIN : Gold plated Tin bronze
Housing Material : Chrome plated brass
Other metal spare parts : Nickel plated brass
Insulator material: PPS
IP Rating : IP68
*ALL MATERIALS ARE RoHS COMPLIANT.



MHCP1TxxSS

Pin Configuration



| Pin Configuration | 08 | 10 | 12 | 14 | 16 |
|----------------------------|---------------------|-----|-----|-----|-----|
| Pin Number | | | | | |
| Pin Size (mm) | 0.7 | 0.5 | 0.5 | 0.5 | 0.5 |
| Withstand voltage (V) (AC) | 875 | 750 | 750 | 750 | 750 |
| Rated Current (A) | 5.0 | 2.5 | 2.0 | 2.0 | 1.5 |
| Insulation resistance (MΩ) | ≥5000MΩ (500V (DC)) | | | | |
| R (max) (mΩ) | ≤12.5 | ≤15 | ≤15 | ≤15 | ≤15 |
| AWG (max) Stranded Wire | 26 | 28 | 28 | 28 | 28 |

THESE DRAWINGS AND SPECIFICATIONS ARE THE PROPERTY OF MH CONNECTORS AND SHALL NOT BE REPRODUCED, COPIED OR USED AS THE BASIS FOR THE MANUFACTURE OR SALE OF APPARATUS WITHOUT WRITTEN PERMISSION.

| | | | | | |
|------------|----|------------|--------|----------|---|
| DRAWN | | E.P. | | DATE | |
| | | | | 23-10-23 | |
| APPROVED | | S.R. | | DATE | |
| | | | | 23-10-23 | |
| SCALE | NA | SHEET OF | 2 OF 2 | REV: | 2 |
| DRAWING No | | MHCP1TxxSS | | | |



THIS SERIES FULLY CONFORMS TO THE EUROPEAN UNION DIRECTIVES 2015/863/EU AND 2011/65/EU FOR RoHS COMPLIANCY.



MH CONNECTORS,
DIVISION OF EDAC