

THIS IS A C.A.D. GENERATED DRAWING  
DO NOT MAKE MANUAL REVISIONS TO MASTER.



UNLESS OTHERWISE SPECIFIED TOLERANCES  
ON DECIMAL IS: ANGLE  
UNIT: MM X.  
X.X

1) Product main performance:

Operating Temperature : -55°C~150°C  
Humidity(max): <=95% [at 60 deg C / 140 F]  
Salt Spray Corrosion : 96hr

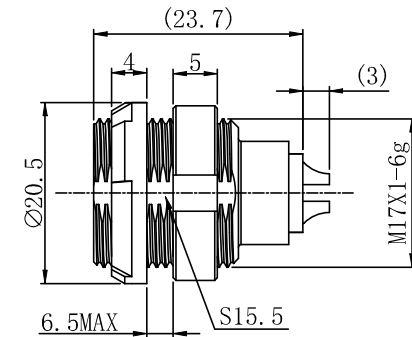
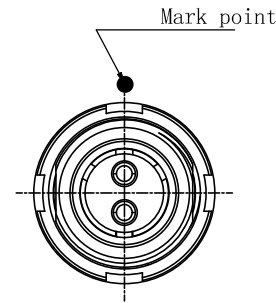
Mechanical data:

Vibration: 15g[10Hz~2000Hz]  
Endurance (Shell): 1000+

Other Specification:

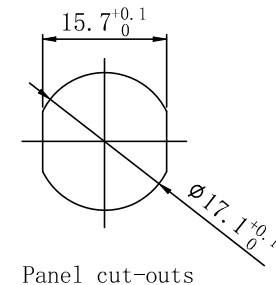
Contact PIN: Gold plated Tin bronze  
Housing Material: PSU  
Other Shell Material: PSU  
Insulator material: PPS  
IP Rating: IP50

\*ALL MATERIALS ARE RoHS COMPLIANT



# MHCP2PxxSS

Pin Configuration



Pin Configuration	02	03	04	05	06	07	08
Pin Number							
Pin Size (mm)	2.0	1.6	1.3	1.3	1.3	1.3	0.9
Withstand voltage (V) (AC)	2100	2400	1850	1750	1350	1750	1500
Rated Current (A)	30.0	17.0	15.0	14.0	12.0	11.0	10.0
Insulation resistance (MΩ)	≥5000MΩ (500V (DC))						
R (max) (mΩ)	≤3.5	≤4	≤5	≤5	≤5	≤5	≤9
AWG (max) Stranded Wire	16	16	20	20	20	20	24

THESE DRAWINGS AND SPECIFICATIONS ARE THE PROPERTY OF MH CONNECTORS AND SHALL NOT BE REPRODUCED, COPIED OR USED AS THE BASIS FOR THE MANUFACTURE OR SALE OF APPARATUS WITHOUT WRITTEN PERMISSION.

DRAWN		DATE	
E.P.		23-10-23	
APPROVED		DATE	
S.R.		23-10-23	
SCALE	SHEET OF	REV:	
NA	1 OF 2	2	
DRAWING No			
MHCP2PxxSS			



THIS SERIES FULLY CONFORMS TO THE EUROPEAN UNION DIRECTIVES 2015/863/EU AND 2011/65/EU FOR RoHS COMPLIANCY.



MH CONNECTORS,  
DIVISION OF EDAC

THIS IS A C.A.D. GENERATED DRAWING  
DO NOT MAKE MANUAL REVISIONS TO MASTER.



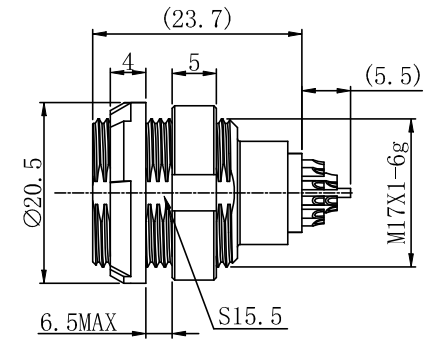
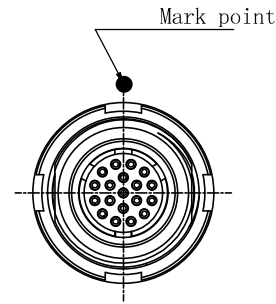
UNLESS OTHERWISE SPECIFIED TOLERANCES  
ON DECIMAL IS: ANGLE  
UNIT: MM X.  
X.X

1) Product main performance:

Operating Temperature : -55°C~150°C  
Humidity(max): <=95% [at 60 deg C / 140 F]  
Salt Spray Corrosion : 96hr

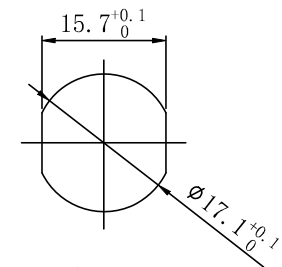
Mechanical data:  
Vibration: 15g[10Hz~2000Hz]  
Endurance (Shell): 1000+

Other Specification:  
Contact PIN: Gold plated Tin bronze  
Housing Material: PSU  
Other Shell Material: PSU  
Insulator material: PPS  
IP Rating: IP50  
\*ALL MATERIALS ARE RoHS COMPLIANT



# MHCP2PxxSS

Pin Configuration



Panel cut-outs

Pin Configuration	10	12	16	19	26	32	34
Pin Number							
Pin Size (mm)	0.9	0.7	0.7	0.7	0.5	0.5	0.5
Withstand voltage (V) (AC)	1450	1250	1500	1400	1000	700	700
Rated Current (A)	8.0	7.0	6.0	5.0	2.0	1.5	1.5
Insulation resistance (MΩ)	≥5000MΩ (500V (DC))						
R (max) (mΩ)	≤9	≤12.5	≤12.5	≤12.5	≤15	≤15	≤15
AWG (max) Stranded Wire	24	26	26	26	28	28	28

THESE DRAWINGS AND SPECIFICATIONS ARE THE PROPERTY OF MH CONNECTORS AND SHALL NOT BE REPRODUCED, COPIED OR USED AS THE BASIS FOR THE MANUFACTURE OR SALE OF APPARATUS WITHOUT WRITTEN PERMISSION.

DRAWN		E.P.		DATE	
				23-10-23	
APPROVED		S.R.		DATE	
				23-10-23	
SCALE	NA	SHEET OF	2 OF 2	REV:	2
DRAWING No		MHCP2PxxSS			



THIS SERIES FULLY CONFORMS TO THE EUROPEAN UNION DIRECTIVES 2015/863/EU AND 2011/65/EU FOR RoHS COMPLIANCY.



MH CONNECTORS,  
DIVISION OF EDAC